



Laser Machining prototype cnc machining Precision Parts Stainless Steel Spacer

Our Product Introduction

for more products please visit us on cnc-metalmachining.com

Basic Information

- Place of Origin: Shenzhen China
- Brand Name: Xiange
- Certification: ISO9001
- Model Number: CNC-Metal-18
- Minimum Order Quantity: 1 pcs
- Price: USD \$0.1-\$5
- Packaging Details: Carton, Plastic cargo
- Delivery Time: 7-10 days
- Payment Terms: T/T, Western Union, MoneyGram
- Supply Ability: 10000 pcs per month



Product Specification

- Type: Turning, Milling, Etching / Chemical Machining, Laser Machining, Broaching
- Material Capabilities: Aluminum, Stainless Steel, Brass, Copper, Hardened Metals
- Process: Turning, Grinding, Milling, CNC Machining, Bending, CNC Milling
- Surface Treatment: Anodizing, Ni/Cr/Zinc Plating, Heat Treatment, Black Oxidation
- Application: CNC Automotive Parts, CNC Metal Parts Services Factory Industrial, Medical Equipment, Automotive, Household, Engineering
- QC System: 100% Inspection Before Shipment, Third Party Inspection
- Services: OEM ODM, CNC Machining, 3d Printing Service, Customized OEM, Design, Cnc Precision Parts Cnc Machining Parts Small Metal Parts Gear
- Used: Motor, Auto computer Telecom mechanical



More Images



Product Description

CNC Metal Spacer Machining, CNC Metal Prototype Precision Stainless Steel Spacer CNC Aluminium Milling Machining

What We Can Provide

Product Description

Service Items	CNC Machining, Prototype, 3D Printing, CNC Precision Parts, Kits, Sheet Metal Processing, Silicone Compound Mold, Small Batch Customization, etc.
Service Features	Technological Innovation, Complex and Difficult Sample Processing, Fast Quotation, Fast Processing, High Precision, High Quality, Product Confidentiality, One-to-one Service, High Cost Performance
Application Area	Mechanical Hardware, Electronic Instruments, Household Appliances, Lighting, 3C Digital, Mobile Phones, Automobile & Motorcycle Accessories, Automated Robots, Drones, Medical Equipment, Aerospace & Military Industry, etc.
Processing Technology	3/4/5-axis CNC Machining, Lathe Processing, Rapid Prototyping, 3D Printing SLA/SLS/SLM/FDM, Silicone Compound Mold, Sheet Metal Forming, EDM, Wire Cutting, etc.
Processing Equipment	CNC Machining Center, CNC lathe, CNC Engraving & Milling Machine, Milling Machine, 3D Printer, Drilling & Tapping Machine, Sandblasting Machine, etc.
Processing Capacity	1000-5000 per day
Manufacturing Process	1. Project Customization 2. Disassembly & Programming 3. Material Preparation 4. CNC Processing 5. QC Inspection 6. Surface Treatment 7. General Quality Inspection 8. Shipment of Finished Products
Drawing Format	3D: IGS, STP, STEP, PRT, XT, STL (3D Printing File) 2D: DWG, DXF, PDF
Processing Material	Metal: Aluminum Alloy, Zinc Alloy, Magnesium Alloy, Titanium Alloy, Steel, Copper, Brass, Stainless Steel, Sheet Metal, etc. Plastic: ABS, PC, PE, PP, POM, Acrylic (PMMA), FR4, Nylon, Bakelite, Silicone Rubber, etc.
Surface Treatment	Grinding, Polishing, Silk Screen, Electroplating, UV, Oxidation, Wire Drawing, Laser Carving, Sandblasting, Leather Texture, Surface Etching, Baking Finish Encapsulation, Transfer, Bronzing, etc.
Quality Inspection	1. Material Quality Inspection 2. Accuracy Quality Inspection 3. Appearance Quality Inspection 4. Functional Quality Inspection 5. Structural Quality Inspection 6. Surface Treatment Quality Inspection 7. Packaging Quality Inspection
Inspection Equipment	3-coordinate Measuring Instrument, 2.5-dimensional Measuring Instrument, Inner Diameter Micrometer, Outer Diameter Micrometer, Electronic Height Ruler, Thread Pass-through Gauge, External Thread Ring Gauge, Electronic Caliper, Needle Gauge, etc.
Production Process	1. Material Procurement 2. Material Inspection 3. Material Storage 4. Order Picking 5. CNC Processing 6. QC Initial Inspection 7. Surface Treatment 8. QC General Quality Inspection 9. Finished Product Storage 10. Packaging 11. Packaging Inspection 12. Shipment
Construction Period	1-10 Days (The Actual Construction Period Depends on the Quantity and Requirements of the Product)
Product Packaging	Inner Packing: Foam, Plastic, Paper, etc. Outer Packing: Hard Thick Cardboard Box, Custom Wooden Box, etc.
Cooperation Process	1. Provide Samples/Drawings 2. Project Quotation 3. Confirm Order 4. Processing & Production 5. Packaging & Delivery 6. Confirm Receipt
Payment Method	T/T, MoneyGram, Western Union
Shipping	Support Express · Sea Freight · Air Freight

Xiange Technology

We have been manufacturing precision checking fixtures, casting parts, CNC machined parts, sheet metal parts, metal pressed parts,

metal screws and metal clips and spinning parts for a wide range of industry,including automotive,aerospace,medical, electronics,telecommunication,construction, marine,lighting system, and energy industries.

Our CNC machining products include:

CNC machining motor parts
CNC machining drone parts
CNC automotive parts
CNC machining motor parts
CNC machining robot parts
CNC medical parts,kits
Heat sink machining
Metal bushing machining
Metal Pins machining
Metal Nut machining
Metal flange machining
CNC fabrication parts
Metal spacer machining
Etc.

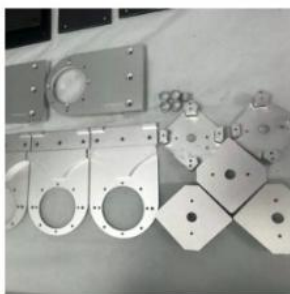
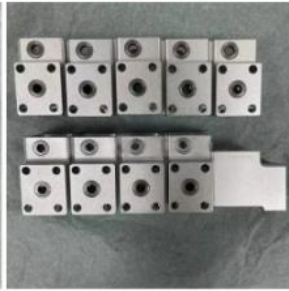
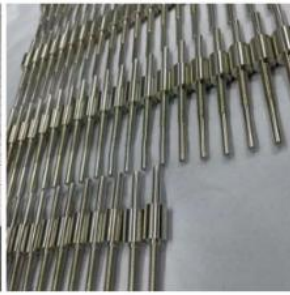
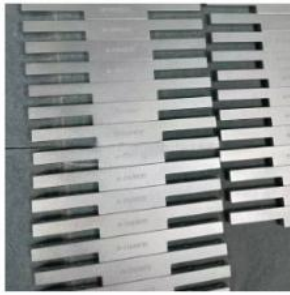
Our advantages	1. Fast prototyping 2. 18 years' experience of CNC machining and stamping services 3. Small order acceptable 4. ISO9001/ISO14001/ISO-TS16949 certified factory 5. Quality assurance system 6. Quick production and delivery
Our equipments	1. CNC gantry milling machine, 2500x1300mm 2. CNC machining centers, drill and tap, engraving machine 3. CNC turning centers 4. Swiss lathes 5. Hydraulic stamping machines 6. Tapping machines 7. EDM wire cutting , drilling machine 8. Molded plastic injection machines 9. 3-dimensional measuring instruments, projectors, test machines
Materials applicable	Aluminum, Copper, Stainless Steel, Titan Alloy, Hard Alloy, Teflon, Nylon, PEEK etc.
Surface	Anodize, polishing, brushing, gold/silver/nickel plating, passivation, dacromet etc
Tolerance	+/- 0.005 to +/-0.01mm
Order quantity	Small order acceptable
Our services	Drilling, Laer Machining, Milling, Other Machining Services, Turning
Quotation against	2D drawings (PDF, JPG, DWG), 3D drawings (STP, IGS) or sample
Lead time	1.Prototyping 3-5 days for CNC machining parts, 2. Tooling -15-25 days 3. Production - depends on order quantity.

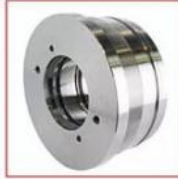
Custom Metal Solutions

Candle Holders/Cups	Medical Containers	Metal End Covers	Mobile Phone Shells
Crafts Stamping Parts	Tablewares	Aluminum Lids	Cabinet Enclosures
Lighting Stamping Parts	Filters/Strainers	Cosmetic Caps	Furniture Accessories
Metal Brackets/Stands	Protective Shields	Essential Oil Caps	Door&Window Fittings
Electronic Components	Sheet Metal Panels	Perfume Caps	Shafts/Sleeves/Gears
Electrical Connections	Cooling Fins	Wine Bottle Caps	Fasteners
Metal Structures	Metal Contact Clips	Jar Caps	Machinery Parts
Car Spare Parts	Motor Spare Parts	Glass Bottle Caps	Pipe Fittings/Elbows

Quality Control Standards	
To consistently exceed customer expectations, quality control and assurance is achieved through	
• Comprehensive written procedures and policies	• Fully equipped inspection department
• Detailed records of incoming raw material	• Consistent calibration and labeling of inspection tools
• Optional XRF analysis reports	• Designated areas for non-conforming parts
• Analysis of root cause of non-conformances	• Staff members being strongly encouraged to suggest
• Test tools:3D projectors, ordinary projectors, all kinds of accurate measuring toolsSalt spraying testers, high temperature resistant testers, low temperature resistant testers, etc	improvements in methods, materials and suppliers

Product Category





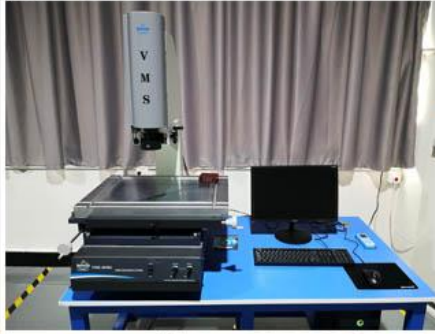
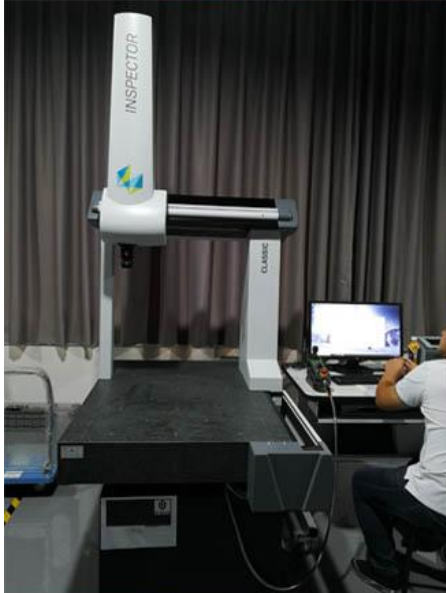


Related Products

CNC Machining Parts



Our Test Equipment





Surface Treatment

	Surface Treatment	Material available	Note
	As machined	All metals e.g aluminum, steel	~125 RA μin (3.2 RA μm). Minor tool marks will be visible on the part.
	Smoothed	All metals+Plastic e.g aluminum, steel, nylon, ABS	Parts are machined at a lower feed rate in order to achieve a surface roughness of ~62.5 RA μin (1.6 RA μm). Surface roughness can be decreased up to ~32 RA μin (0.8 RA μm) upon request.
	Bead Blasted	All metals e.g aluminum, steel	Bead blasting adds a uniform matte or satin surface finish on a machined part, removing all tool marks. Mainly used for aesthetic purposes.
	Anodized Clear or Color	Aluminum and Titanium alloys	Anodizing adds a thin, hard, non-conductive ceramic coating on the surface of aluminum parts, increasing their corrosion and wear resistance. Available in a variety of colors.
	Anodized Hardcoat	Aluminum and Titanium alloys	Hardcoat anodizing produces a thicker ceramic coating providing excellent corrosion and wear resistance. for functional applications.
	Powder Coated	All metals e.g aluminum, steel	Powder coating adds a thin layer of strong, wear and corrosion resistant protective polymer paint on the surface of a part. Available in a large range of colors.
	Electropolished	Metal+plastic e.g aluminum, ABS	Electropolishing is an electrochemical process used to polish, passivate and deburr metal parts. It is useful to reduce surface surface roughness.
	Brushing	All metals e.g aluminum, steel	Brushing is produced by polishing the metal with grit resulting in a unidirectional satin finish.

WHY CHOOSE US

9 service advantages



Factory self-operated

Our factory is self-operated without intermediary price difference, price concessions



Quality Assurance

Each product can be delivered only after passing the inspection, and the quality is assured



On time delivery

Produce immediately after finalization, and deliver on time at the appointed time



Professional service

We are professional in every link from image recognition to production



Drawing confidential

Strict drawing management system eliminates the risk of leakage and protects your interests



Private custom

Create your own products, what do you need we do for you



Professional proofing

Professional and efficient technical workers support samples or customized drawings



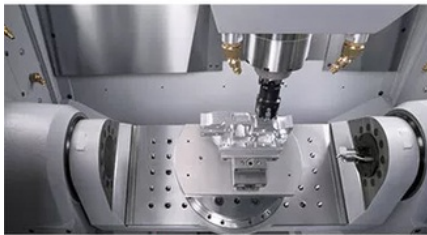
Shortened lead time

The manufacturer directly arranges production to shorten the transportation cycle and shorten the delivery time



Dedicated docking

From entering the store to receiving the goods, we provide you with exclusive personal services



High Precision

5-Axis CNC & Imported machines with accuracy $\pm 0.02-0.10\text{mm}$



Fast Lead Time

Multiple CNC machines, skillful workers, guarantee fast lead time



Strictly Confidential

We will protect the customers' design and the customer can request a confidentiality agreement



Quality Inspection

We have a strict quality inspection process to ensure the quality of our products

Factory Equipment



WEDM



Milling Machine



CNC Wire Cut



Coordinate measuring machine



CNC Bending Machine



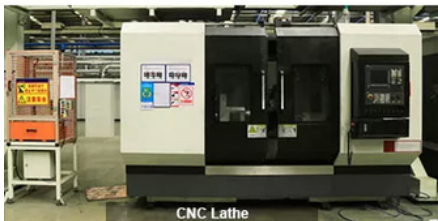
Hydraulic Press Machine



SLS/SLA Machine



5-Axis CNC



CNC Lathe



Laser cutting Machine



CNC Punching Machine



Injection Molding machine



FAQ

Q1: What to be clearly indicated when I send you drawing?

A:You are kindly requested to let us know the raw material, finish and quantity at least.

Q2: How large is your facility?

A: Our plant covers over 2,000 square meters of manufacturing space, over 30 highly and experienced employees located in Shenzhen City China.

Q3: Do you have multiple plants?

A: Yes, we have five plants, all the plant located in a close distance, it takes within 10 minutes from headquarter to each plant. If you project is up against a deadline, we can put your project on the right machines, and the right plants with profession expertise to provide you with quality product.

Q4: Can you do prototype machining?

A: Yes, we run the quantity FROM 1 TO 100,000+ PARTS.

Q5: What size of a part can usually run?

A: Lathe machines can run parts up to 300 mm in diameter and parts up to 1500 mm long. Milling machines can run parts up to 400 mm in diameter and parts up to 1200 mm long.

Q6: What if we are not completely satisfied with the parts we received?

A: We will replace any parts or components free of charge that you are not satisfied with. We stand behind every part we provide. If we make a mistake, we will make it right with you.



Shenzhen Xianheng Technology Co.,Ltd



0086-13682614486



shawn@xianheng-tech.com



cnc-metalmachining.com

Room 8-1409, Xingji jiayuan building 8-9#, HongXing community, Songgang street, Bao'an District, Shenzhen City China