



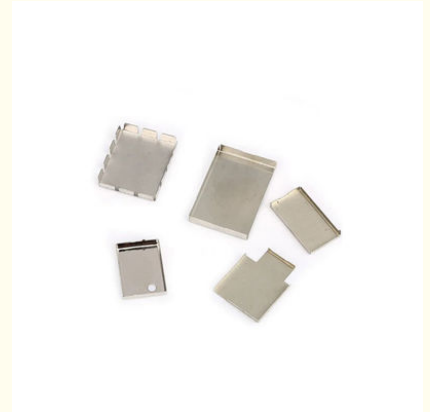
Enclosure Spcc Sheet Metal Parts Stamping Emi RF Shielding Cover Case RF Shield Products Supplier

Our Product Introduction

for more products please visit us on cnc-metalmachining.com

Basic Information

- Place of Origin: China
- Brand Name: Xianheng
- Certification: ISO 9001:2015 SGS RoHS
- Model Number: RF-XG-27
- Minimum Order Quantity: 1 pcs
- Price: USD 0.01\$-0.5\$
- Packaging Details: Carton Wooden case
- Delivery Time: 5-8 days
- Payment Terms: T/T, Western Union, MoneyGram
- Supply Ability: 10000 SET per week

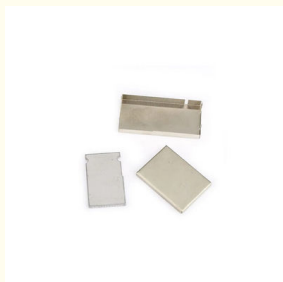


Product Specification

- Products: SMD EMI PCB RF Shield Cover, stamping Contacts, Metal Parts
- Process: Metal Sheets Fabrication, Welding Cutting Punching Stamping
- Application: SMD EMI PCB RF Shield Cover, Mobile PCB Cover
- Tolerance: +/-0.02mm
- Equipment: Precision Stamping Parts
- Material: Tin Plate Copper-Nickel-Zinc Alloy
- Function: Shielding Cover
- Used: PCB Board, mobile Phones Cover, Computers, GPS, Watches, Digital Products And Other Electronic Products, Prevent Electromagnetic Interference (EMI), On PCB Components And LCM Shield
- Surface Finishing: Normal, tin Plating, nickel Plating
- Package: Plastic Bag, Blister Box, Tap Reel Or As Your Required



More Images



What We Can Provide

Enclosure Spcc Sheet Metal Parts Stamping Emi RF Shielding Cover Case RF Shield Products Supplier

Description Of High Quality RF Shield Metal Stamping RF Shield Products Supplier

"Enclosure SPCC Sheet Metal Parts Stamping EMI RF Shielding Cover Case RF Shield Stamping Service" specializes in the design and manufacture of metal enclosures and shielding components used to protect electronic devices from electromagnetic interference (EMI) and radio frequency interference (RFI).

Precision Stamping:

Advanced Stamping Technology: Employing high-precision stamping machines to produce intricate and detailed shielding covers and cases with tight tolerances.

High Volume Production: Capable of handling both small and large-scale production runs efficiently.

EMI/RF Shielding:

Effective Shielding Solutions: Designing and manufacturing shielding covers that effectively block EMI and RFI, ensuring the integrity of electronic signals.

Custom Designs: Tailoring shielding solutions to meet specific requirements of different electronic devices and applications.

Material Of High Quality RF Shield Metal Stamping RF Shield Products Supplier

Material and Testing Report		
Metal	Aluminum	Aluminum 2024 Aluminum 5052 Aluminum 6061-T6 Aluminum 6063 Aluminum 7075 Aluminum MIC 6
	Stainless steel	SUS303, SUS304, SS316, SS316L UNS S32304 UNS S32003 UNS S31803 UNS S32205
		UNS S32760 UNS S32750 UNS S32550 UNS S32707 UNS S33207
		12L14 4140 1018 1045 12L14 4130 4142 ,O1 tool steel, D2 tool steel,A36 1008 ,Alloy42
	Titanium	Grades 1-4 Grade 5 Grade 9
	Brass	260, C360, H59, H60, H62, H63, H65, H68, H70
	Copper	
	Phosphor bronze	
	Bronze	C932
	Carbon fiber	
PTFE	Polytetrafluoroethylene (PTFE)	
Plastic	Acetal	(Polyoxymethylene (POM)) [Delrin]
	PEEK	Polycarbonate
	Polystyrene	Polyether Ketone
	Nylon	
	ABS	
	PVC	
	Acrylic	
G-10 Garolite Fiberglass		

Finish Result	
As Machined	Sharp edge and burrs will be removed
Bead Blast	The part surface is left with a smooth, matte appearance
Anodized	Type II creates a corrosion-resistant finish. Parts can be anodized in different colors—clear, black, red, and gold are most common—and is usually associated with aluminum.
	Type III is thicker and creates a wear-resistant layer in addition to the corrosion resistance seen with Type II.
Powder Coat	This is a process where powdered paint is sprayed onto a part which is then baked in an oven.
	This creates a strong, wear- and corrosion-resistant layer that is more durable than standard painting methods. A wide variety of colors are available to create the desired aesthetic.
Customized	Contact us via email, skype, whatsapp. We will look into a finishing process for you.
Others	
Tolerance	+/-0.005mm
Lead Time	1-2 weeks for samples, 3-4 weeks for mass production

Drawing Accepted	Solid Works, Pro/Engineer, AutoCAD(DXF, DWG), PDF
Payment Terms	TT/Paypal/WestUnion

Application Of High Quality RF Shield Metal Stamping RF Shield Products Supplier

1. Aircraft parts
2. Automobile parts
3. Fixture parts
4. Medical parts
5. Petro chemical parts
6. Education parts

Features Of High Quality RF Shield

1. High precision
2. Short processing time
3. Easier customized/personalized

Why Choose Us

Our Advantages

1. Small details make big difference. We promise:All the parts from our company have no sharp edge. All dimensions are controlled according to your drawings. Every product will be fully inspected and carefully packed to prevent the bump and rust in transit.
2. The craftsmanship of all parts we machined is controlled rigorously, Every product has its own process card and process chart.
3. Our quality inspection procedure is quite strict.it must self-inspected during production, we have flow inspectors and professional inspectors.
4. Each size of product must be tested one by one after completing production and provide quality report.
5. The most important point, we are the entity factory, not trading company. Price is the composition of the actual product quality price. Quality can guarantee more controllable higher than trading company. The price is competitive, at least reducing the trade company's service fee.
6. We have many years of export experience,exports to the US,Europe, Japan and other countries and regions.
7. Our team are more professional. We have more reasonable price and better quality controlling than trade company. And our language ability is also diversified.

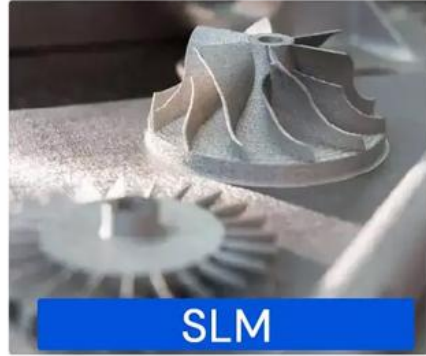
Techniques Available

• SLA

• SLS

• MJF

• SLM



FAQ

Q1: Where can I get product & price information?

A1: Send us inquiry e-mail, we will contact you as we receive your mail.

Q2: How long can I get the sample?

A2: Depends on your specific items, within 3-7 days is required generally.

Q3: What kinds of information you need for quote?

A3: Kindly please provide the product drawing in PDF, and will be better you can provide in STEP or IGS.

Q4: What are the payment terms?

A4: We accept 50% as payment deposit, when the goods is done, we take photos for your check and you then pay the balance.

Q5: Are you a trading company or factory?

A5: We are direct factory with 10 experienced engineers and more than 650 employees as well approximate 2,000 square ft. workshop area.

Q6: What shall we do if we do not have drawings?

A6: Please send your sample to our factory, then we can copy or provide you better solutions. Please send us pictures or drafts with dimensions (Length, Height, Width), CAD or 3D file will be made for you if placed order.



Shenzhen Xianheng Technology Co.,Ltd

☎ 0086-13682614486

✉ shawn@xianheng-tech.com

🌐 cnc-metalmachining.com

Room 8-1409, Xingji jiyuan building 8-9#, HongXing community, Songgang street, Bao'an District, Shenzhen City China