



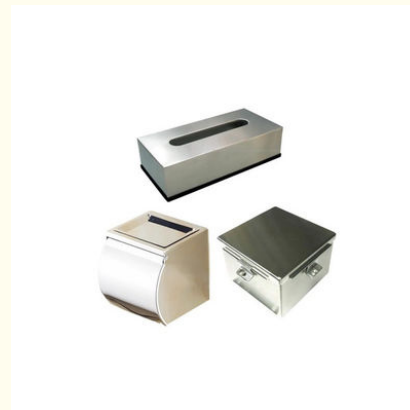
Carbon Steel Stamping Stainless Steel Shell Construction High-Performance Metal Cabinet Assembly

Our Product Introduction

for more products please visit us on cnc-metalmachining.com

Basic Information

- Place of Origin: China
- Brand Name: Xianheng
- Certification: ISO 9001:2015 SGS RoHS
- Model Number: MC-XG-26
- Minimum Order Quantity: 1 pcs
- Price: USD 0.1\$-2\$
- Packaging Details: Carton Wooden case
- Delivery Time: 5-8 days
- Payment Terms: T/T, Western Union, MoneyGram
- Supply Ability: 10 SET per week

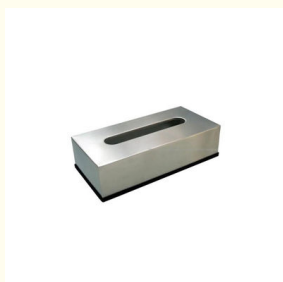


Product Specification

- Material Capabilities: Stainless Steel, Aluminium, Copper, Brass
- Products: Metal Equipment Shell, Sheet Metal Cabinet Assembly Stamping Parts
- Process: Metal Casing, Metal Sheets Fabrication, Welding Cutting Punching Stamping
- Application: Carbinet, Parts: Cars, E-sports Hotel, Architecture, Furniture, metal Plastic Parts
- Place Of Origin: China Guangdong
- Tolerance: +/-0.02mm
- MOQ: 1 Piece
- OEM/ODM: Acceptable
- Equipment: Laser Cutter, CNC Bending Machine, Stamping Machine, Weld
- Surface Treatment: Galvanized, Anodizing, Powder Coated, Chrome Plating, Nickel Plating Etc.
- Craftsmanship: CNC Stamping, CNC Bending, Welding, Laser



More Images



Product Description

What We Can Provide

Carbon Steel Stamping Stainless Steel Shell Construction High-Performance Metal Cabinet Assembly Manufacturer

Description of Carbon Steel Stamping Stainless Steel Shell Construction High-Performance Metal Cabinet Assembly Manufacturer

A Carbon Steel Stamping Stainless Steel Shell Construction High-Performance Metal Cabinet Assembly Manufacturer specializes in producing metal cabinets that combine the durability of carbon steel stamping with the corrosion resistance and aesthetic appeal of stainless steel shells. These cabinets are designed for high-performance applications, offering a robust and stylish storage or enclosure solution. The manufacturer utilizes advanced manufacturing techniques to ensure precision in the stamping and assembly processes, resulting in cabinets that meet stringent quality standards.

Specification of Carbon Steel Stamping Stainless Steel Shell Construction High-Performance Metal Cabinet Assembly Manufacturer

CNC Capacity				
CNC Machining Center	3 / 4 / 5 axis CNC Machining Centers	40+ CNC Machines		
CNC Turning	φ0.5 - φ300 * 750 mm	DIN-2768-Fine +/-0.005 mm		
CNC Machining	1270×508×635 mm(max)	DIN-2768-Fine +/-0.005 mm		
CNC Stamping	1000 * 1000 mm(max)	DIN-2768-Fine +/-0.005 mm		
Drawing Format	IGS,STP,X_T ,DXF,DWG , Pro/E, PDF			
Inspection Equipments	Measurement Instrument, Projector, CMM, Altimeter, Micrometer, Thread Gages, Calipers, Pin Gauge etc.			
Material Available				
Stainless Steel	SS201,SS301, SS303, SS304, SS316, SS416, 17-4PH, etc.			
Steel	Mild steel, Carbon Steel, 4140, 4340, Q235, Q345B, 20#, 45# etc.			
Brass	HPb63, HPb62, HPb61, HPb59, H59, H68, H80, H90 etc.			
Copper	C11000,C12000,C12000 C36000 etc.			
Aluminum	AL6061, AL6063, AL6082, AL7075, AL5052, A380 etc.			
Iron	A36, 45#, 1213, 12L14, 1215 etc.			
Plastic	ABS, PC, PE, POM, Delrin, Nylon, Teflon, PP,PEI, Peek etc.			
Surface Finishing				
Aluminum Parts	Stainless Steel Parts	Steel Parts	Copper /Brass	Plastic Parts
Clear Anodized	Polishing	Zinc plating	Polishing	Painting
Color Anodized	Passivating	Oxide black	Passivation	Chrome plating
Sandblast Anodized	Sandblasting	Nickel plating	Galvanized	polishing
Chemical Film	Laser engraving	Chrome plating	Nickel Plating	Sandblast
Brushing		Carburized	Chrome plating	Laser engraving
Polishing		Heat treatment		
Chroming		Powder Coated		

Application Of Carbon Steel Stamping Stainless Steel Shell Construction High-Performance Metal Cabinet Assembly Manufacturer

1. Auto Components Hardware Parts Auto Parts
2. Communication Equipment
3. Industrial Equipment
4. Medical EquipmentsMechanical Parts
5. Ship Accessories
6. Electrical Equipment
7. Mechanical Equipment

Feature Of Carbon Steel Stamping Stainless Steel Shell Construction High-Performance Metal Cabinet Assembly Manufacturer

1. Good corrosion resistance
2. High strength and hardness
3. High thermal conductivity
4. Good finishing characteristics

Why Choose Us

Our Advantages

1. Durability and Strength:

The combination of carbon steel stamping and stainless steel shells provides exceptional durability and strength. Carbon steel, known for its high tensile strength, is used for the structural components, while stainless steel adds corrosion resistance and a sleek finish. This ensures that the cabinets can withstand heavy loads and harsh environments, making them ideal for industrial, commercial, and residential applications.

2. Corrosion Resistance:

Stainless steel is renowned for its ability to resist corrosion, making it an excellent choice for cabinet shells. This property ensures that the cabinets remain rust-free and maintain their aesthetic appeal over time, even in wet or humid conditions. This is particularly beneficial in environments such as kitchens, bathrooms, and outdoor areas where exposure to water and moisture is common.

3. Aesthetic Appeal and Customization:

The use of stainless steel shells not only enhances the durability of the cabinets but also adds a modern and sleek aesthetic. The manufacturer can offer a range of customization options, including different finishes, textures, and sizes, to meet the specific needs and preferences of customers. This allows for the creation of unique and personalized cabinet assemblies that can complement any interior design.

Factory Show

Factory Equipment



WEDM



Milling Machine



CNC Wire Cut



Coordinate measuring machine



CNC Bending Machine



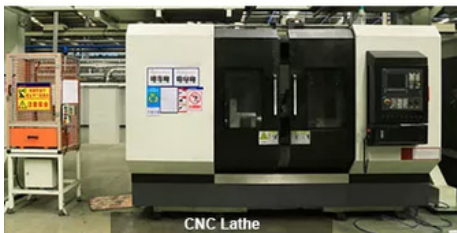
Hydraulic Press Machine



SLS/SLA Machine



5-Axis CNC



CNC Lathe



Laser cutting Machine



CNC Punching Machine



Injection Molding machine



FAQ

1. How can I get the price? - We usually quote within 24 hours after we get your inquiry (except weekend and holidays). If you are urgent to get the price, please email us or contact us in other ways so that we can offer you a quote.
2. Can I buy samples? - Yes. Please feel free to contact us.
3. What is your lead time? - It depends on the order quantity and the season you place the order. Usually we can ship within 7-15 days for small quantity, and about 30 days for large quantity.
4. What is your payment term? - T/T, Western Union, MoneyGram, and Paypal. This is negotiable.
5. What is the shipping method? - It could be shipped by sea, by air, or by express (EMS, UPS, DHL, TNT, FEDEX etc). Please confirm with us before placing orders.
6. How do you make our business long-term and good relationship? - We keep good quality and competitive price to ensure our customers benefit. Furthermore, we respect every customer as our friend and we sincerely do business and make friends with them, no matter where they come from.



Shenzhen Xianheng Technology Co.,Ltd

☎ 0086-13682614486

✉ shawn@xianheng-tech.com

🌐 cnc-metalmachining.com

Room 8-1409, Xingji jiayuan building 8-9#, HongXing community, Songgang street, Bao'an District, Shenzhen City China